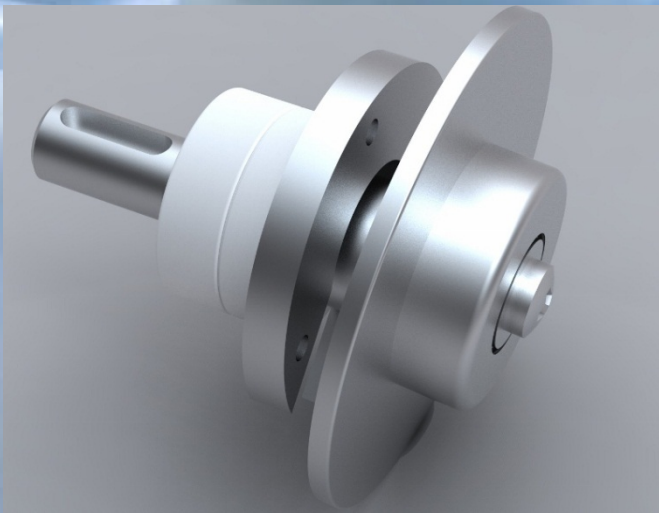
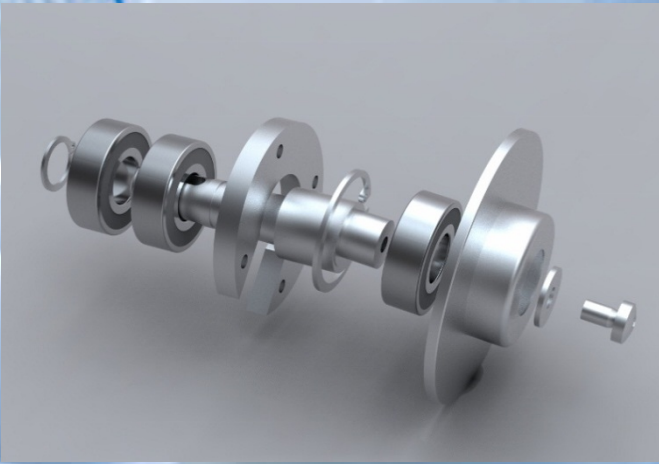


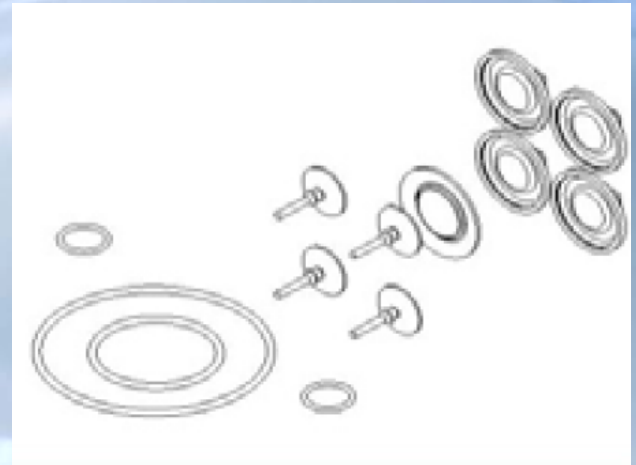
Maintenance

Component	Action	Recommended Frequency
Motor	Maintenance free	n/a
Coupling	Maintenance free	n/a
Bearings	Replacement as complete Shaft/ Bearing/ Cap unit (as pump service kit available)	2 years
	Replacement after any broken diaphragm event	immediately
Elastomers	Replacement of O-rings, diaphragms and valves (spare part kit)	Yearly or after 1000 hours
Q5050 drive belt	Check of drive belt; replacement if wear is observed	yearly

Service kits



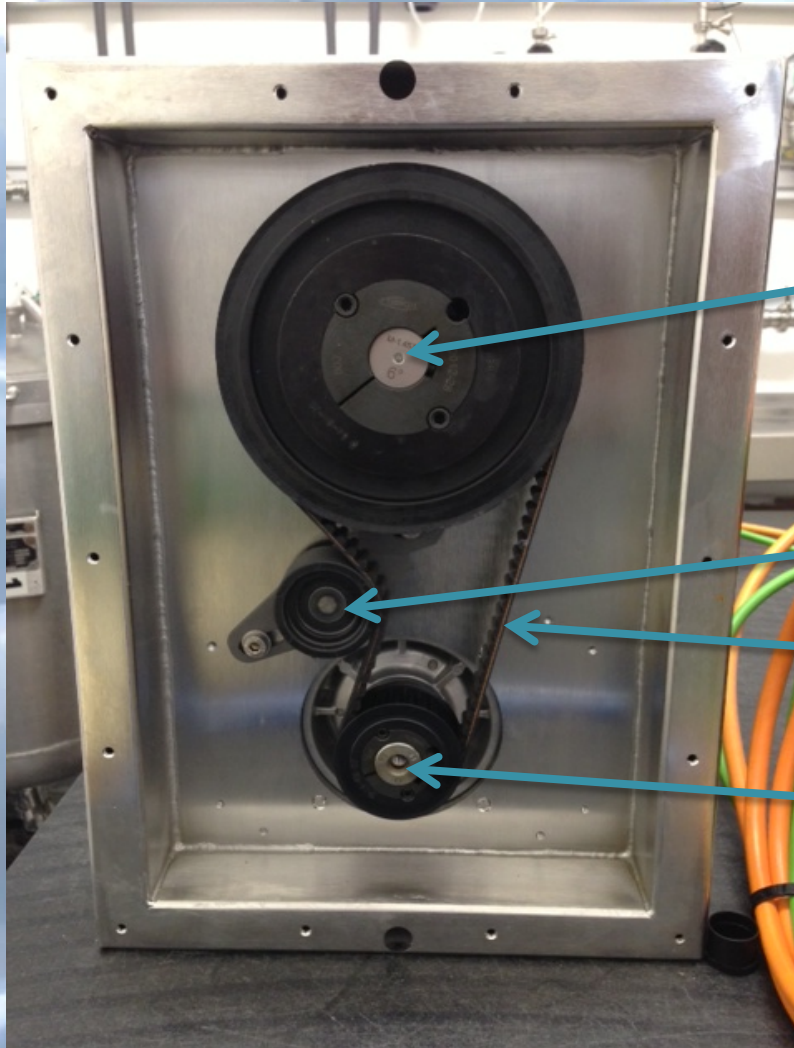
Pump service kit, preassembled
(Shaft, Bearing, Cap)



Elastomer kit
(O-rings, valves, diaphragms)

Q5050: Drive belt

Rear side of Q5050;
protective cover removed



Pump shaft with pulley

Tension roller

Drive belt

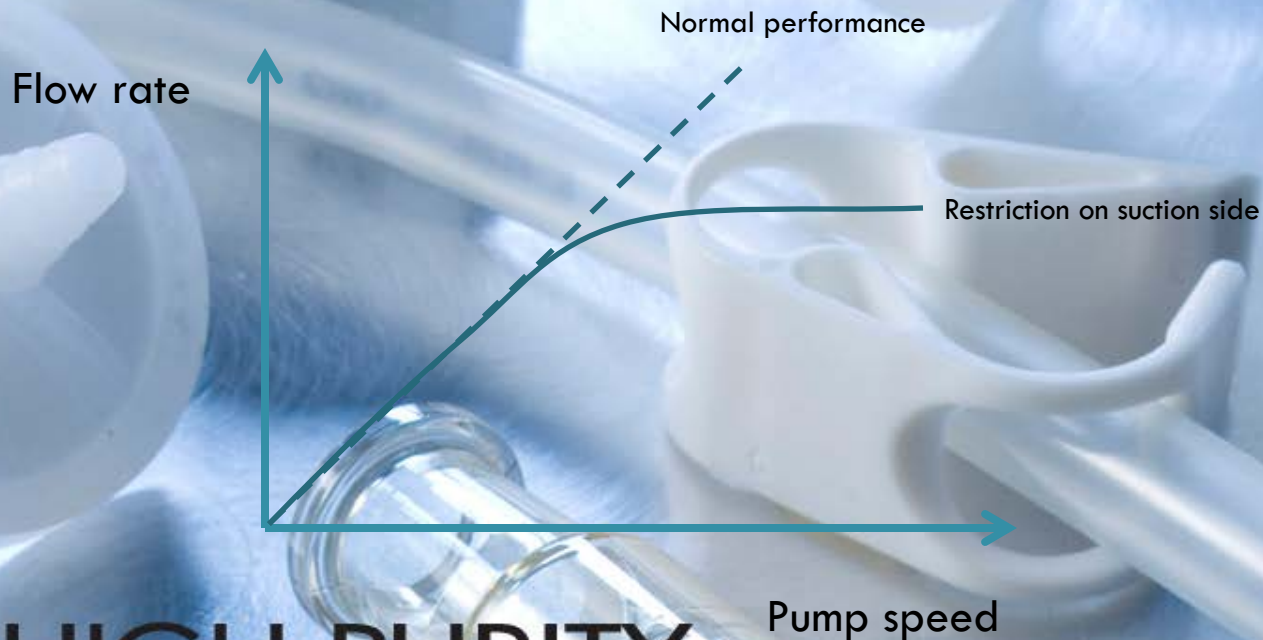
Motor shaft with pulley

HNE HIGH PURITY
NEW ENGLAND

...Client / Vendor Relationships - - we bring VALUE !!!

Trouble shooting

Issue	Cause	Remedial action
<ul style="list-style-type: none">Maximum achievable flow rate is lower than specified	<ul style="list-style-type: none">Flow restriction on suction side	<ul style="list-style-type: none">Increase hose/tube diameter on suction sideDecrease suction heightVerify valves on suction side



Trouble shooting

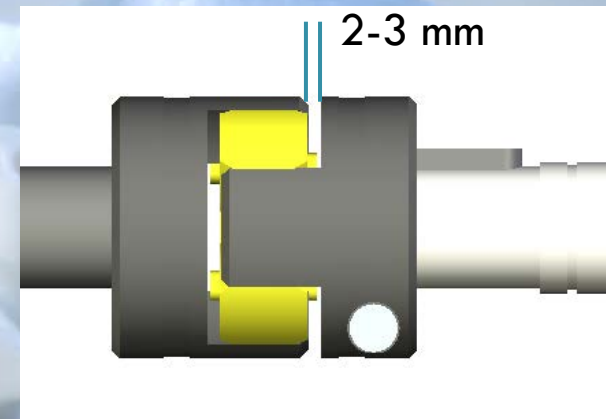
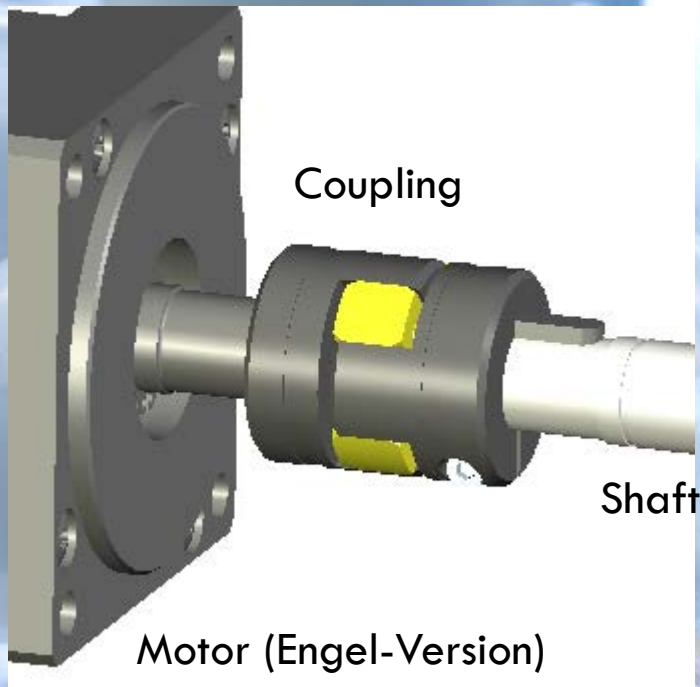
Issue	Cause	Remedial action
<ul style="list-style-type: none">Pump does not prime/suck	<ul style="list-style-type: none">Inlet valve is dry and does not close properlyPump head has been autoclaved and inlet valves do not open	<ul style="list-style-type: none">Use WFI to wet the pumpConnect suction side of pump with compressed air. Carefully apply pressure to open inlet valves



Inlet valve

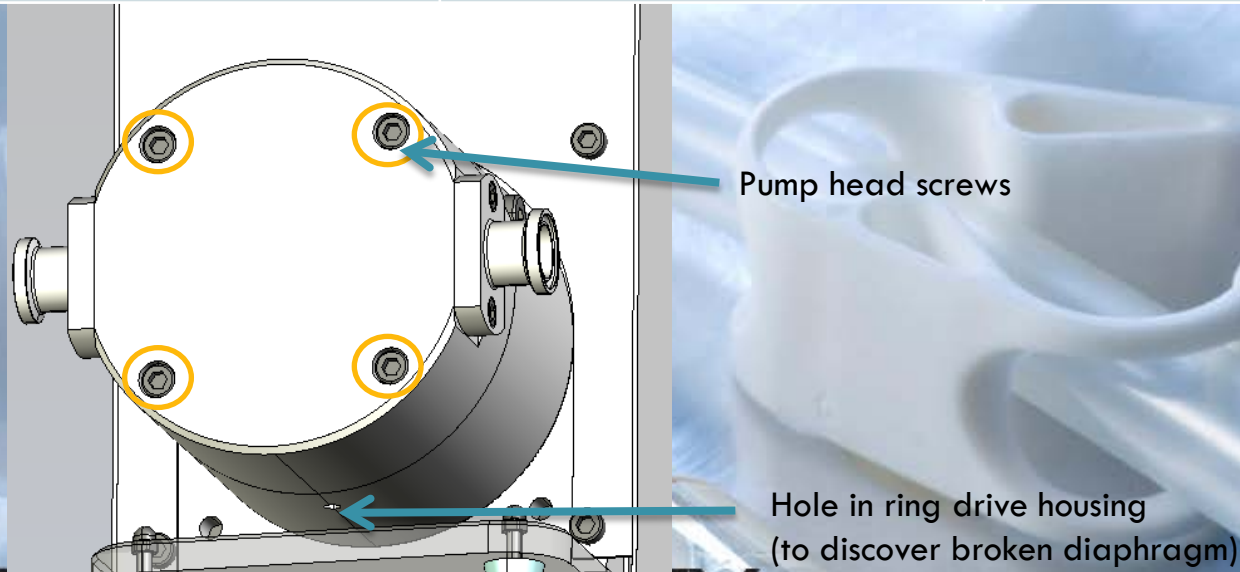
Trouble shooting

Issue	Cause	Remedial action
<ul style="list-style-type: none">• Drive shaft/coupling is getting hot	<ul style="list-style-type: none">• Coupling distance too small	<ul style="list-style-type: none">• Check distance of coupling (min 2mm)



Trouble shooting

Issue	Cause	Remedial action
Pump leakage	<ul style="list-style-type: none">• Diaphragm broken• Pump head screws not fasten properly	<ul style="list-style-type: none">• Replace broken diaphragm• Protect pump from excessive pressure by using a pressure switch• Reduce deceleration time of variable speed drive• Fasten 4 screws from pump head (consider specified torque value for SU pumps)



THE HIGH PURITY
NEW ENGLAND

...Client / Vendor Relationships - - we bring VALUE !!!